

April 2026 School Meal Support Activity Report

<This Month's Impact>

•School Meals

- Number of meals provided: 204,193 meals
- Number of children supported: 20,553 children

•Main Achievements

- Expanded opportunities for children to learn about different careers through Career Day
- Continued school meal operations led mainly by local volunteers
- Maintained children's motivation to attend school and their daily routines through meal provision
- Strengthened cooperation with external supporters and schools

•Main Challenges

- Lack of access to safe water
- Burden of securing water for meal preparation
- Decrease in attendance rates in some areas

<Changes This Month>

•Learning Opportunities through Career Day





A Career Day organized by Mother Teresa Catholic Kindergarten was held, and schools supported by Seibo also participated. The children were able to learn about various occupations and gain opportunities to think about their future jobs through interaction with external participants.

Through hands-on career-related activities and presentations, the children were seen thinking about their own interests and future possibilities. This event also contributed to improving their motivation to learn and their social skills.

- Continuation of Community-Led School Meal Operations

Each CBCC continues to operate its school meal program mainly through local volunteers. By having parents and community members participate in cooking and facility operations, a system in which the whole community supports the children has been maintained.

- The Role of School Meals in Supporting Children's Lives

School meals serve as an important source of nutrition for the children. By providing stable meals, the program helps maintain children's motivation to attend school and supports a stable learning environment.

- Ongoing Challenges Related to Water Resources

Some facilities continue to face challenges due to a lack of access to safe water. Securing the water needed for meal preparation and hygiene management remains a major burden, and there are also concerns about its impact on living conditions and health.

<Field Examples>

1. Chisomo CBCC

School Meal Operations through Community Cooperation



Chairman Yamada visited Chisomo CBCC and observed parents volunteering to prepare school meals. At the site, Malawi's traditional porridge, "Likuni Phala," is prepared on a daily basis.

Through conversations with the parents, information was shared about the effort required to prepare school meals and the reality of how community-led operations are being supported. Cooperation within the local community is an important factor in sustaining continuous school meal support.

2. Chisomo CBCC

Challenges in Accessing Water Resources

During the visit, the condition of the water source was also checked. At the facility, it is difficult to secure safe water, which affects daily school meal preparation and hygiene management.

Even under limited conditions, the site continues to operate through various efforts and adjustments. The need to improve the water environment was confirmed once again.



3. Makwika Nursery School

School Meal Support and Its Impact on Families

At Makwika Nursery School, volunteers in charge of preparing school meals help support the operation of the facility. Through school meal support, the children are able to continue receiving nutritious meals.

In addition, the parents who work as volunteers are also able to earn income, which helps cover their children's education expenses. School meal support affects not only the children, but also the stability of the entire household.

4. Makwika Nursery School

Cooperation with External Supporters





Makwika Nursery School continues to receive support through the MACOSY Project. At the site, it was shared that school meal support helps maintain the children's health and stabilize their learning environment.

Cooperation with external supporters plays an important role in the continued operation of local facilities.

5. Mlambe CBCC

Support through School-to-School Cooperation

At Mlambe CBCC, support continues through cooperation with Fukushima Prefectural Fukushima Minami High School.

Through the initiative in which “one cup of coffee leads to approximately 25 school meals,” a supportive relationship has been built between students across national borders. At the site, continuous school meal provision remains an important factor in supporting the children's lives.

6. Mlambe CBCC

Exchange through School Meals





Chairman Yamada tasted “Likuni Phala” together with the children. Experiencing the school meal firsthand became an opportunity to deepen understanding of the local food culture and the role of school meals.

At the site, it was confirmed that the children were eating in a safe environment and continuing their daily lives.

7. Mpotola CBCC

Life Support through School Meals



At Mpotola CBCC, the provision of school meals supports children’s health and helps them continue attending school.

School meals also play an important role for the local community, helping to create an environment where children can learn in a stable way.

<New Initiatives toward Improving the School Meal Environment>



Ambassador Naito attended the groundbreaking ceremony for a project to construct school meal kitchens at primary schools in Mzimba District. The ceremony was also attended by Mr. Emmanuel Bulukutu, District Commissioner of M'mbelwa District Council.

Earlier this year, the Embassy of Japan and Seibo Maria Malawi signed a grant agreement under the Grant Assistance for Grassroots Human Security Projects to

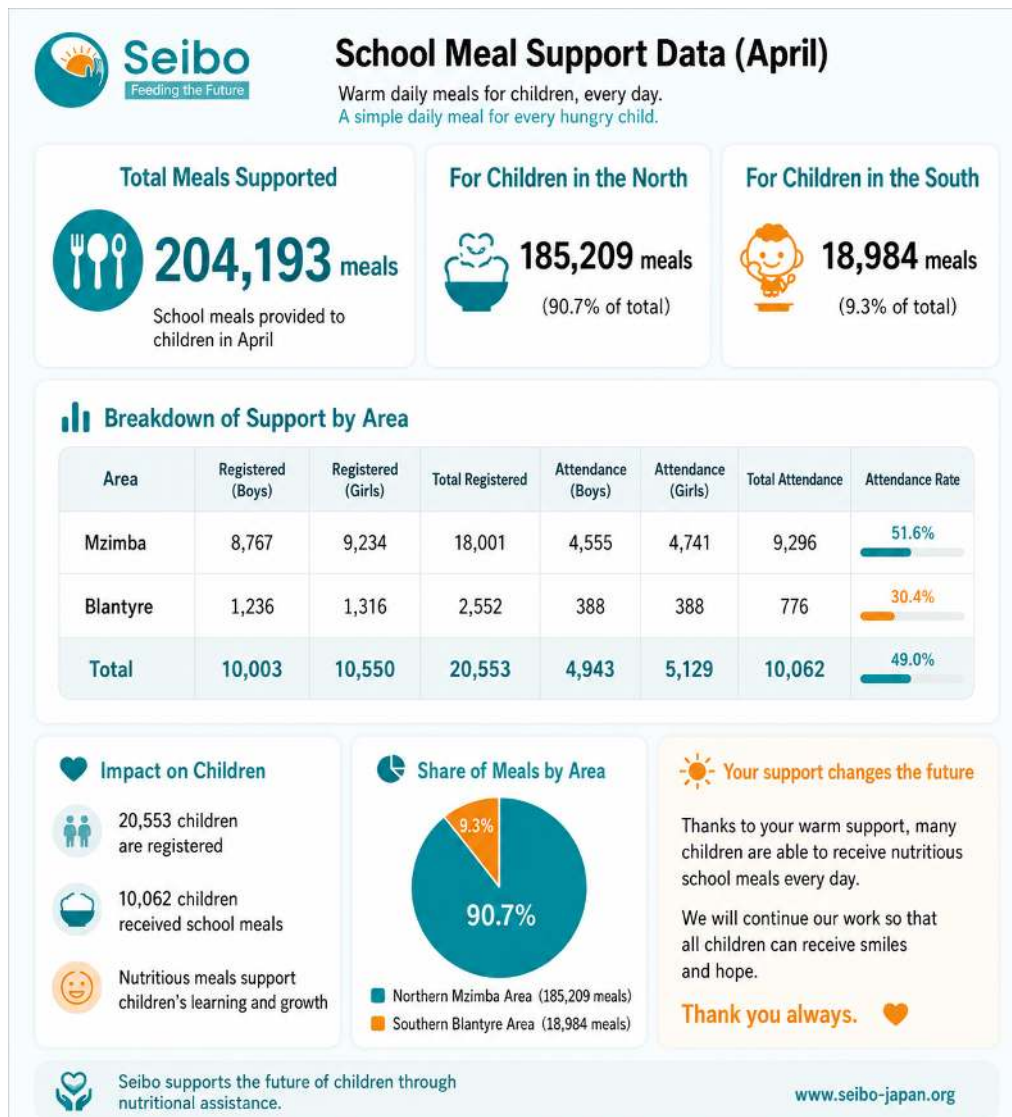


support the construction of school meal kitchens at Macherecheta Primary School, Chabere Primary School, and Kanyerere Primary School.

In his speech, Ambassador Naito expressed his hope that these kitchens will provide children with warm meals every day and help them continue attending school while learning energetically. He also called on the local community to work together to support the future of children in Malawi.

We are not simply building school meal kitchens. We are building a brighter future for the next generation.

School Meal Support Data (April)





Gender Ratio

Boys: 10,003 / Girls: 10,550

→ Support continues without a major imbalance between boys and girls.

<Future Direction of Support>

- Securing safe water and improving the hygiene environment
- Continuing support for community-led school meal operations
- Strengthening attendance and learning support through school meals
- Expanding cooperation with external schools and supporters
- Continuing monitoring toward improving children's living environments